



[www.rjwc.se](http://www.rjwc.se)  
[support@rjwc.se](mailto:support@rjwc.se)

**CFMoto CFORCE**  
**800/850/1000 XC Dual APX**  
**INSTALLATION MANUAL**  
**17030DAPX**



If you have any questions or require any support regarding installation of this system, please contact your local RJWC dealer or contact RJWC Directly at [Support@rjwc.se](mailto:Support@rjwc.se)

**GET EXHAUSTED!**  
**BY RJWC**



## **The important stuff!**

Always wear protective gloves and glasses when installing custom exhaust systems. Cuts and scrapes suck, but losing an eye would SUCK even more. So keep yourself safe.

Make sure to ALWAYS start the work on a cold engine so you don't risk burning yourself. Burning your toast is bad, burning your skin is even worse. Trust us.

After your first ride, re-tighten all bolts.

## **Parts Included**

2x M8 70mm Hexagon Bolts	1x Heat Pad
6x M8 40mm Hexagon Bolts	2x Exhaust Gasket
2x M5 Hexagon Bolts	2x Shims
10x M6 Allen Bolt	2x Spark Arrestors
8x M5 Screws	1x Pipe Clamp
2x Aluminium Cylinder Spacers	1x Graphite Gasket
2x Exhaust Spring Spacer	4x Rectangular Washer
8x Standard Washers	4x Exhaust Brackets
	2x Stainless Mounting Brackets
	8x Rubber Bushings
	8x M5 Lock Washers
	10x M6 Lock Washers

Need help? Got a question?

Get in touch at [support@rjwc.se](mailto:support@rjwc.se) or your closest RJWC Dealer.

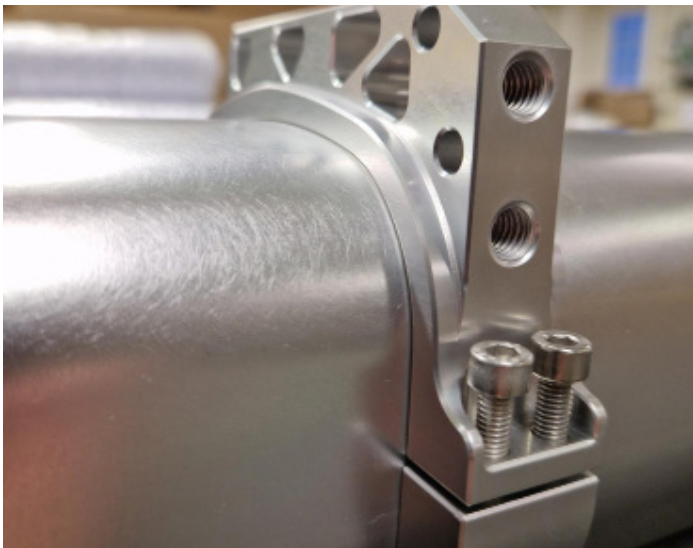


### Getting Started!

In these first steps, we'll be getting the APX Exhaust prepared for installation.

You can always use the image to the left as a guide, as this is how the APX Exhaust should look before we start the installation onto the bike.

Remember! The yellow RJWC Tag should always be facing outwards.



### Step 1.) - Attaching the brackets

- Unpack the four Aluminum Exhaust Brackets.
- Place these onto the APX can and use two M5 Screws on each side to connect the two brackets together.

Note: Don't tighten the bracket too much at this point, we'll need to adjust it slightly later!

- Repeat this for both APX cans.



### Step 2.) - Connecting the pipes

- Place the Exhaust Gasket between the pipe connector and the APX can.
- Make sure each of the 5 holes are lined up and use a M6 Allen Bolt to fasten the pipe connector and APX can together.
- Repeat this for both APX cans.



### Step 3.) - Link the pipes

With the APX cans assembled, you can now connect the two pipes together as shown in the image.



**Important note!** Looking at the APX from the back of the vehicle, the bracket you use on the LEFT APX can has a small 'cut out' in the center of it.



**Important note!** Looking at the APX from the back of the vehicle, the bracket you use on the RIGHT APX is solid. There is no 'cut out'.

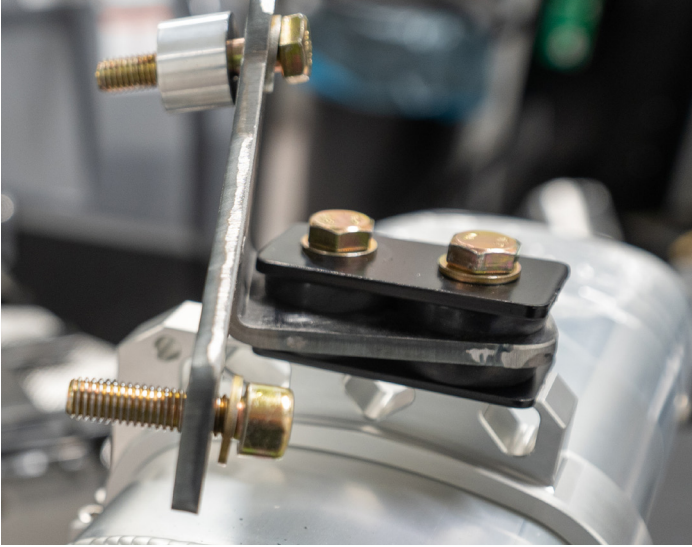
### Step 4.) Assembling the brackets

- To start building the bracket, take 2x M8 40mm Hexagon Bolts and thread a Standard Washer onto each one.

- Run the Hexagon Bolts through the Rectangular Spacer and push a Rubber Bushing onto each bolt so it snugly sits against the Rectangular Spacer.

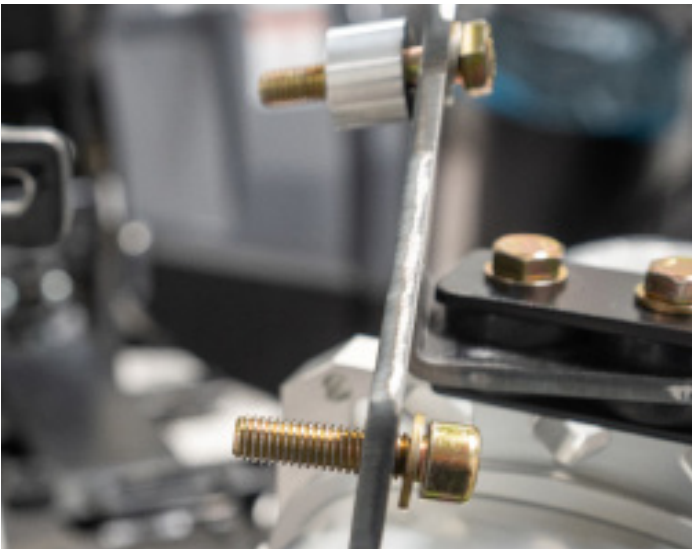
- Attach these two bolts to the Stainless Mounting Bracket and push another Rubber Bushing onto each Bolt so that the Mounting Bracket is wedged between the rubber bushings.

- Repeat this step for both APX cans.



### Step 5.)

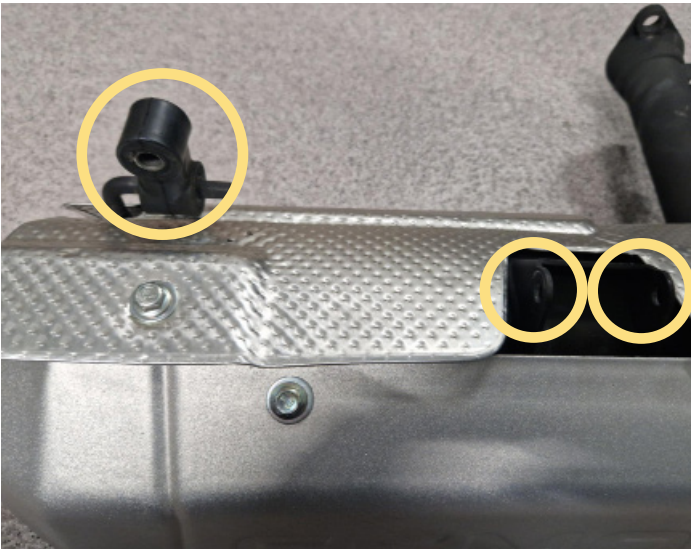
- You can now slide on a second Rectangular Spacer below the two Rubber Bushings and tighten the bolts into the top of the APX Exhaust Bracket.
- Repeat this for both APX cans.



### Step 6.)

- With the exhaust bracket in place, thread a 30mm Hexagon Bolt bottom - 40mm Hexagon Bolt on top.
- Both have standard washer on them.
- Top one has the spacer
- Repeat this for both APX cans.

## Removing the stock exhaust



### Step 1.)

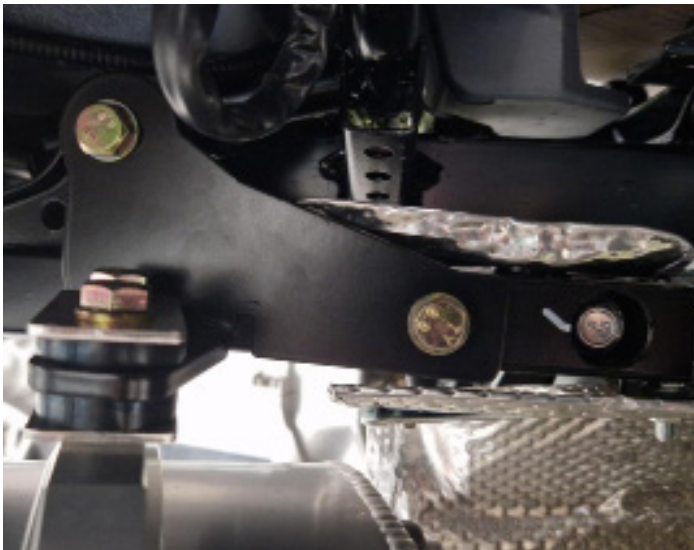
- To remove the Stock Exhaust, unfasten all bolts on the exhaust as circled in the image.



### Step 2.)

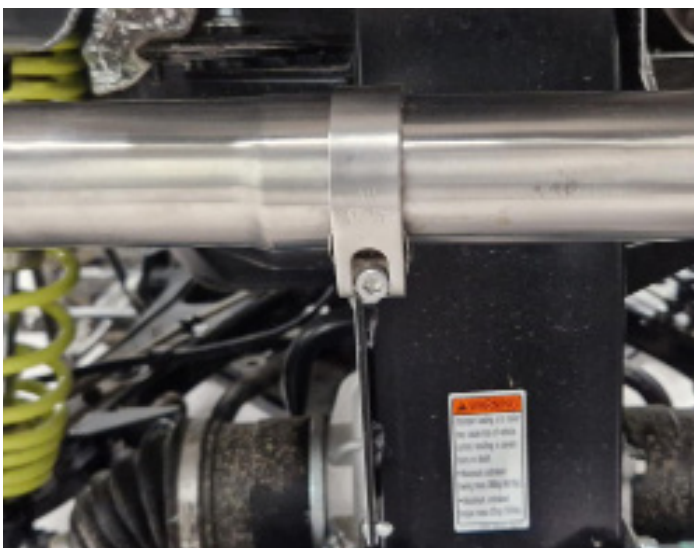
- You will also need to remove connectors from the header pipe, and the bolts holding in the stock springs.
- You will also need to remove the heat shield.

## Installing the new exhaust



### Step 1.)

- Start with attaching the Stainless Exhaust Brackets to the Exhaust Frame of the bike by simply tightening each bolt into the frame.
- Repeat this for both APX cans.
- Once both APX cans are secure and in the correct place, you can now tighten the bolts on the Exhaust Brackets.



### Step 2.)

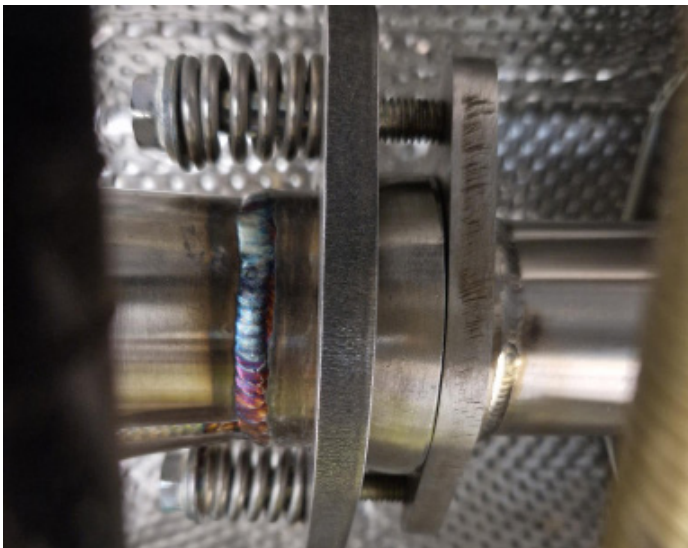
- Use the provided Pipe Clamp to secure the two APX can pipes together.



### Step 3.)

- Using two M8 70mm Bolts, thread a Spring Washer onto each bolt and slide the stock springs onto each bolt.
- Place the Graphite Gasket between the two flanges and tighten each bolt into the flange and tighten securely.
- With this final step complete, you are all set!

**Don't forget to retighten all bolts after your first ride!**





**GET EXHAUSTED!**  
**BY RJWC**

[www.rjwc.se](http://www.rjwc.se)  
[support@rjwc.se](mailto:support@rjwc.se)

**RJWC**  
**POWERSPORTS**