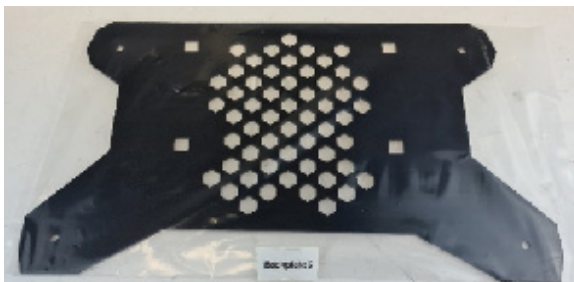


Make sure to let the engine and exhaust cool down before starting any work. Wear protective gloves and proper clothing. Always re-tighten the bolts after the first ride.

ALL MEASUREMENTS ARE METRIC

Hardware included

- Aluminum spacers 33x19x6.5 mm x 2
- Aluminium spacer with hexagon head x 2
- M6 X 20 allen bolts stainless x 10
- M8x70 with spacer and nut for flange x 2
- M6 stainless lock washers x 10
- M8x20 allen yellow chromated bolts x 6
- M8 washers Yellow chromated x 6
- 20x10x8 mm aluminum washers x 4
- M6x45 allen bolts yellow chromated x 2
- M6 Washers yellow chromated x 2
- M8 Lock nuts for flange yellow chromated x 3
- Allen tool kit x 1
- M6 Flange nut yellow chromated x 2
- Stainless clamp 50-55mm x 1
- Anti seize tube x 1
- 5 hole exhaust gasket for inlet pipes
- Spark arrester x 1
- U-pipe and flange pipe stainless
- Inlet pipe stainless
- Flange pipe stainless



Tools needed

13mm (1/2") spanner/wrench tool.

Torx T40 .

5 mm Allen tool (included in the hardware kit).

6 mm Allen tool.

10 mm spanner/wrench tool or socket.

19 mm spanner/wrench tool.

Step 1 – Remove the plastic cover and brackets covering the factory muffler. Then remove the factory muffler and heatshield behind the muffler be careful with the stock gasket and springs as it is being re-used.

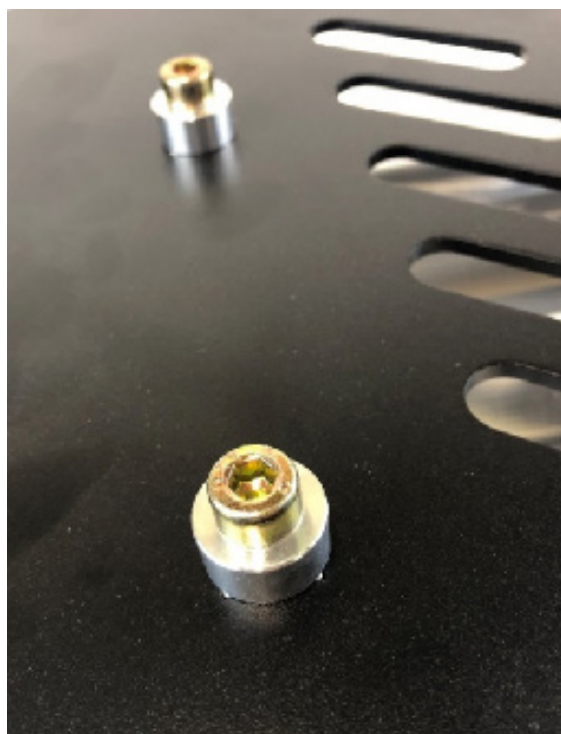
Step 2 – Remove the factory rubber frame bushings, these are loose in the frame.

Step 3 – Install the APX mufflers on the black plate, make sure this is being done according to the pictures, see below and use the M8x20 allen/hex bolts included with the hardware and the aluminum washers 20x10x8 mm.

Turn the square tabs until they line up with the square holes in the aluminum plate then screw in the bolts with the washers see pictures below.

Picture below is on a full flow APX Muffler package for the same vehicle, the procedure is the same .





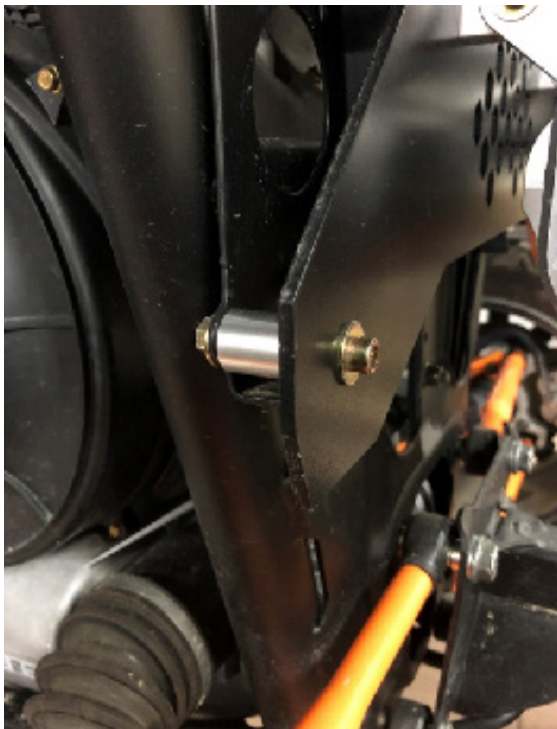
Step 4 - Install the stainless inlet pipe on the lower muffler and the 5 hole gasket included with the hardware. Don't forget to use the gaskets. See picture below.

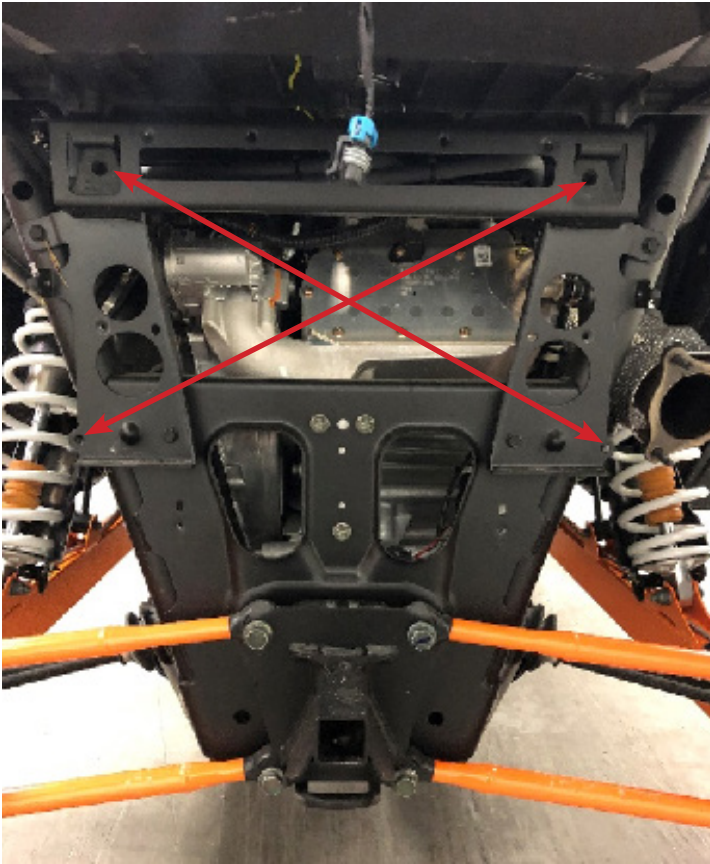


***IT IS VERY IMPORTANT TO RE-TIGHTEN THESE BOLTS AFTER THE FIRST RIDE AND
TO USE THE LOCKING WASHERS INCLUDED***

Step 5 – Install the aluminum hanger tabs in the frame as the picture shows below and use a 19 mm wrench to hold the hexagon head when you tighten down the bolt. And in the same time make sure that the inlet pipe lines up with the stock header pipe flange.

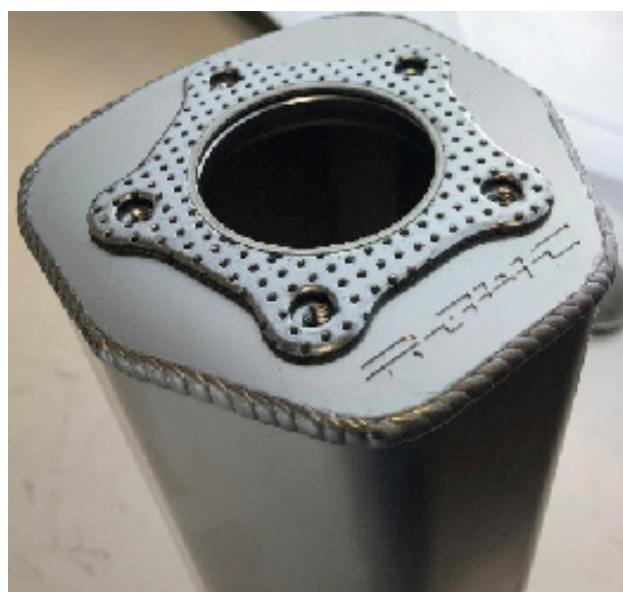
Use the existing holes in the frame as the picture below shows (remove stock bushings) and use the supplied aluminum spacers.





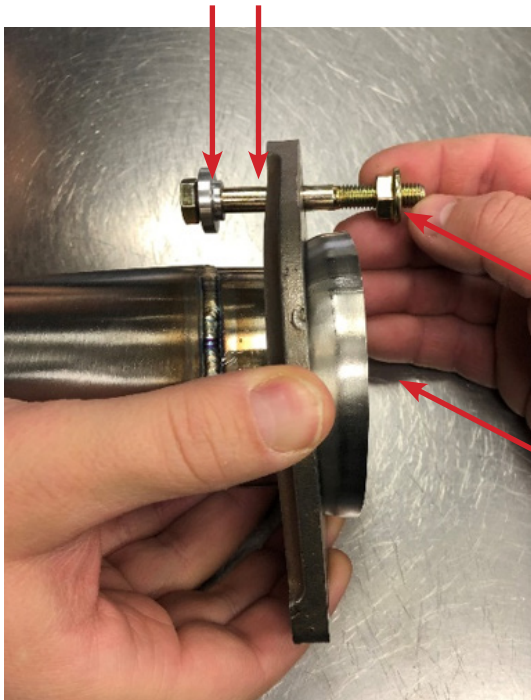
Step 6 – Install the u-pipe as the pictures below shows, use the m6x20 ss allen bolts with lock washers and don't forget to use the gasket included. We recommend a thin layer of the supplied anti seize on the clamps bolt so you can tighten it harder no specific torq are recommended on the bolt tighten it as hard as you can by hand and re-tighten it after the first ride.

**NOTE! DO NOT TAKE THE MUFFLERS APART THE PICTURE IS JUST AN EXAMPLE ON
HOW TO INSTALL THE GASKET AND FLANGED PIPE**



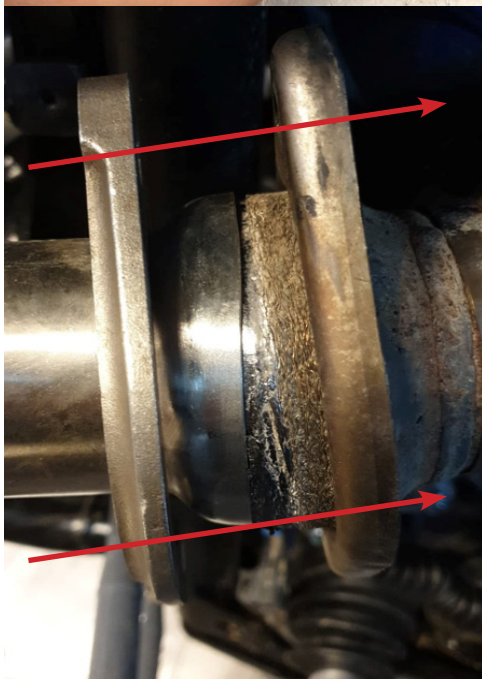
Step 7 – Re-use the stock gasket between the header and inlet pipe. You re-use the stock exhaust spring, but you use the supplied bolt called M8X70 Bolts with aluminum spacer and nut for flange. See the picture below on how to install them.

Stock spring here.



Adjust this and lock it in place.

Stock gasket sits here.





Step 8 – Start the engine let the vehicle idle for 15 min, then turn it off and let it cool down then re-tighten all the bolts. Re-do this procedure after the first ride.

For further information contact support@rjwc.se or your closest RJWC Dealer.