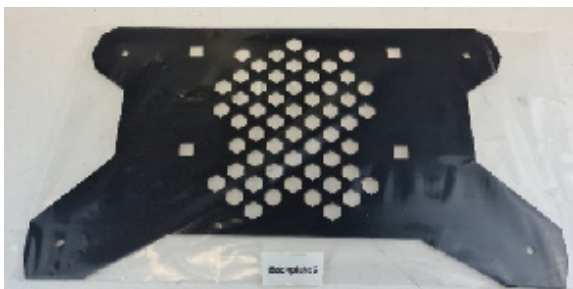


Make sure to let the engine and exhaust cool down before starting any work. Wear protective gloves and proper clothing. Always re-tighten the bolts after the first ride.

ALL MEASUREMENTS ARE METRIC

Hardware included

- Aluminum spacers big with flange x 2
- Aluminium spacer small x 2
- M6 X 20 allen bolts stainless x 10
- M6 stainless lock washers x 10
- M8x20 allen yellow chromated bolts x 8
- M8 washers Yellow chromated x 8
- 20x10x8 mm aluminum washers x 4
- M6x45 allen bolts yellow chromated x 2
- M6 Washers yellow chromated x 2
- M8 Lock nuts for flange yellow chromated x 3
- Allen tool kit x 1
- M6 Flange nut yellow chromated x 2
- Stainless clamp 50-55mm x 1
- Anti seize tube x 1
- 5 hole exhaust gasket for inlet pipes
- 3 hole exhaust gasket
- Spark arrester x 1
- U-pipe and flange pipe
- Powdercoated aluminum plate



Tools needed

13mm (1/2") spanner/wrench tool.

Torx T40 .

5 mm Allen tool (included in the hardware kit).

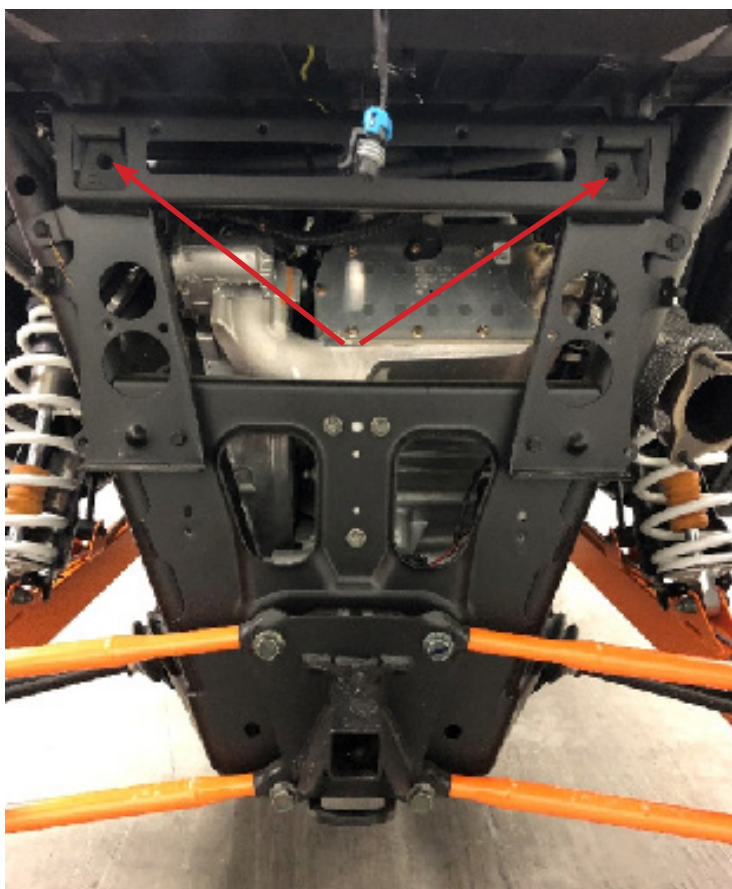
6 mm Allen tool.

10 mm spanner/wrench tool or socket.

19 mm spanner/wrench tool.

Step 1 – Remove the plastic cover and brackets covering the factory muffler. Then remove the factory muffler and heatshield behind the muffler.

Step 2 – Remove the factory rubber frame bushings these are loose in the frame. See picture below.

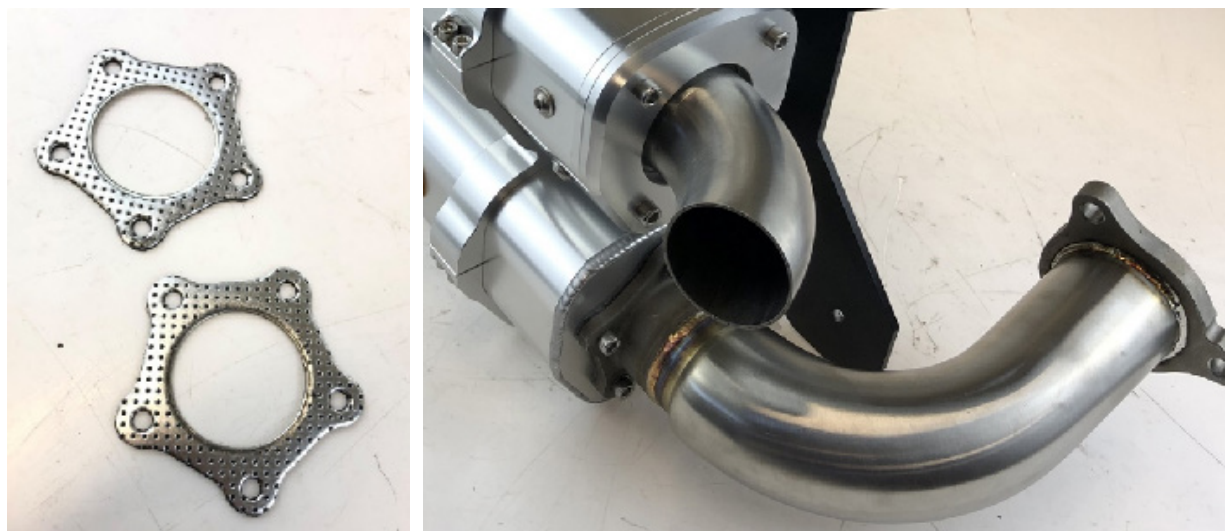


Step 3 – Install the APX mufflers on the black plate, make sure this is being done according to the pictures below and use the M8x20 allen/hex bolts included with the hardware and the aluminum washers 20x10x8 mm.

Turn the square tabs until they line up with the square holes in the aluminum plate then screw in the bolts with the washers, see pictures below.

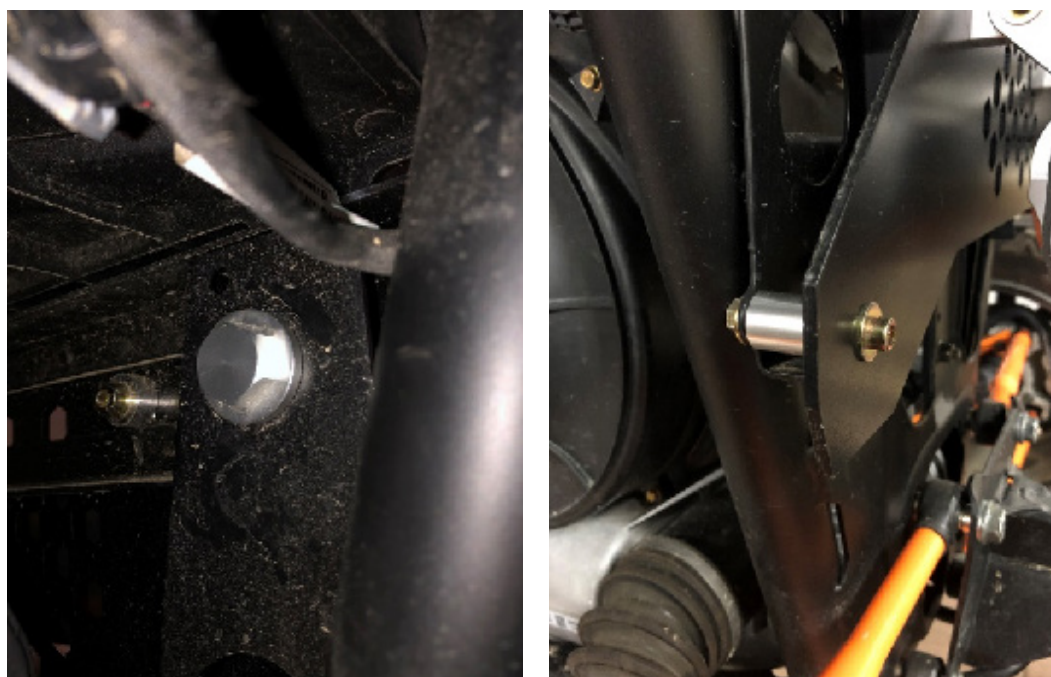


Step 4 - Install the stainless inlet pipe on the lower muffler and the 5 hole gasket included with the hardware. Don't forget to use the gasket included, see picture below (one is used on the opposite side see further down). Use the m5x20 stainless allen bolts and lock washers .



***IT IS VERY IMPORTANT TO RE-TIGHTEN THESE BOLTS AFTER THE FIRST RIDE AND
USE THE LOCKING WASHERS INCLUDED***

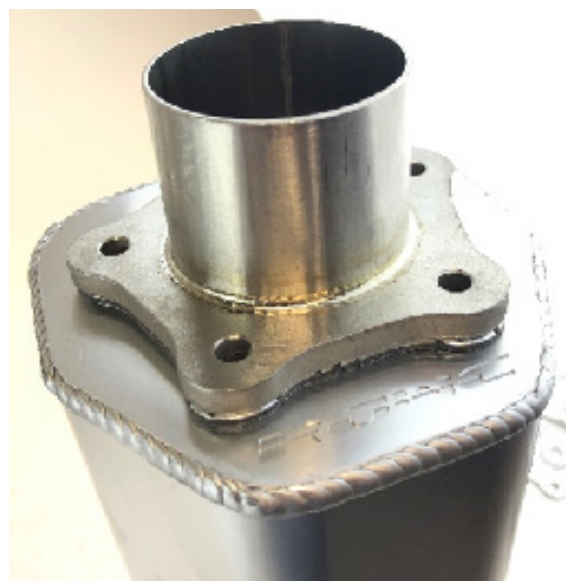
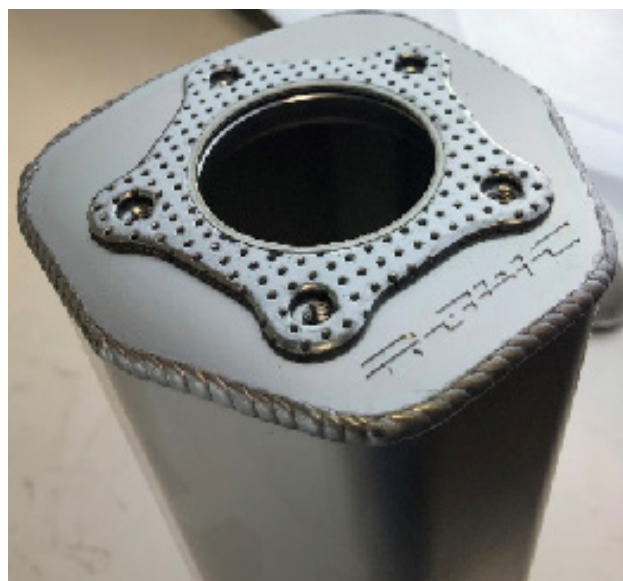
Step 5 – Install the aluminum hanger tabs in the frame as the picture shows below and use a 19 mm wrench to hold the hexagon head when you tighten down the bolt. Make sure that the inlet pipe lines up with the stock header pipe flange use the 3 hole exhaust gasket included, see picture below.



***NOTE! THE PROCEDURE IS THE SAME ON THE FULL FLOW AND QUIET EXHAUST
WHEN IT COMES TO HOW THE BACKPLATE IS BEING INSTALLED***



Step 6 – Install the u-pipe as the pictures below shows. Use the m6x20 ss allen bolts with lock washers and don't forget to use the gasket included. We recommend a thin layer of the supplied anti seize on the clamps bolt so you can tighten it harder. No specific torq are recommended on the bolt tighten it as hard as you can by hand and re-tighten it after the first ride.



Step 7 – Replace the stock gasket between the header and inlet pipe . See the picture below on how to install the inlet pipe.



Step 8 – Install the muffler package on the frame and line it up with the header flange to make sure everything sits as it should. Then tighten everything down.

Step 9 - Start the engine let the vehicle idle for 15 min, then turn it off and let it cool down then re-tighten all the bolts. Re-do this procedure after the first ride.

For further information contact support@rjwc.se or your closest RJWC Dealer.

RJ Weld & Custom AB

Bullerleden 9

961 67 Boden, SWEDEN

www.rjwc.se

