



***DUAL APX
CAN-AM DEFENDER
HD8, HD10, XMR & MAVERICK TRAIL
INSTALLATION MANUAL***

THE IMPORTANT STUFF!

Dual APX - Can-Am Defender HD8, HD10, XMR & Maverick Trail 10129730

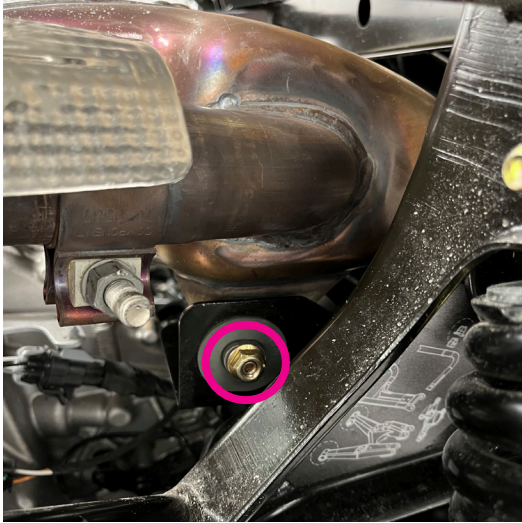


- Read all instructions before installation.
- Ensure your vehicle is turned off, and engine and exhaust system are cold.
- Use the necessary protective gear; gloves, goggles etc.
- Make sure your vehicle is on flat, stable ground.
- Check your local laws and regulations to make sure the part you are installing is in compliance and legal for the type of use you intend.
- **After your first ride, re-tighten all bolts!**

Parts Included

2x Spark Arrestors
2x Shims
2x Exhaust Gaskets
2x Stainless Steel Exhaust Brackets
1x Black Exhaust Frame Bracket
1x Bolt Clamp
2x Standard Washers
2x Springs
4x Button Bolts
2x Hexagon Bolts
10x Lock Washer Bolts
4x M5 Screws
2x Rubber Washers
2x Stainless Washers
1x Graphite Gasket

Need help? Got a question?
Get in touch at support@rjwc.se or your closest RJWC Dealer.



STEP 1.

To start removing the stock exhaust, remove the clamp that connects the stock exhaust.

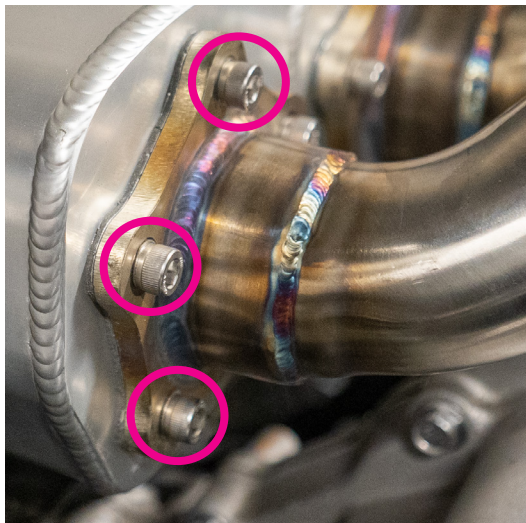
After this, you can remove the 2 bolts on each side of the stock exhaust to loosen it.



STEP 2.

After the two bolts have been removed, you should now be able to slide the stock exhaust out.

DUAL APX



STEP 1.

To start the assembly of your APX;

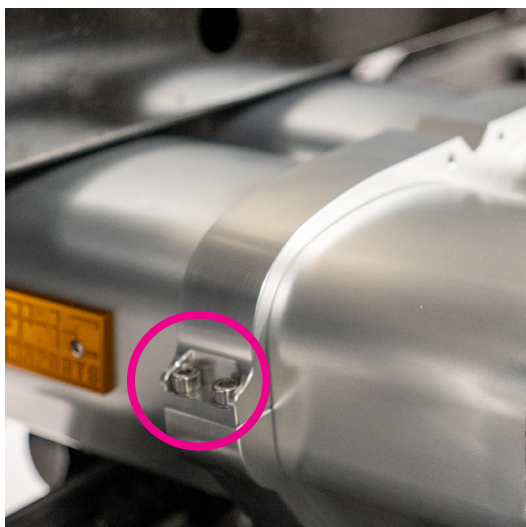
- Place the Exhaust Gasket between the pipe connector and the APX can.
- Use 5 Lock Washer Bolts to fasten the pipe connector to the APX can.



STEP 2.

Repeat this step for the second APX can.

To make sure they are attached correctly, always check that the orange RJWC Logo Plates are facing outwards.

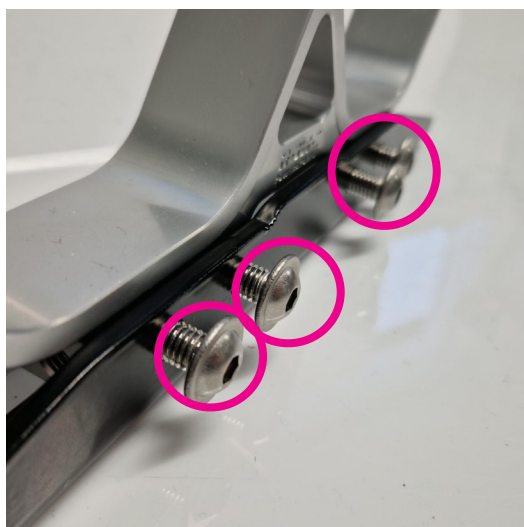


STEP 3.

Unpack the two Stainless Steel Exhaust Brackets and place this onto the APX cans.

Use two M5 Screws on each side to connect the two brackets together.

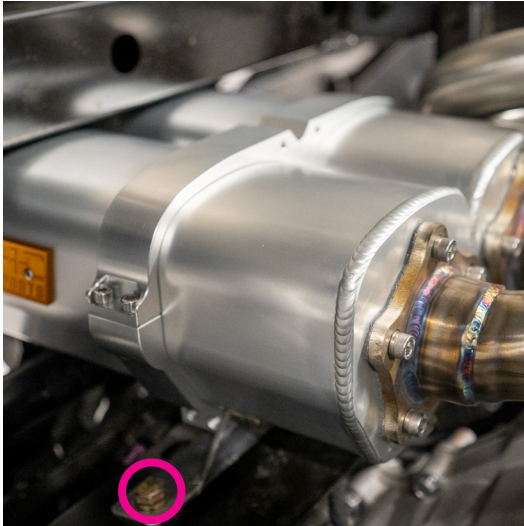
Note: Don't tighten the bracket too much, we'll tighten it in a later step!



STEP 4.

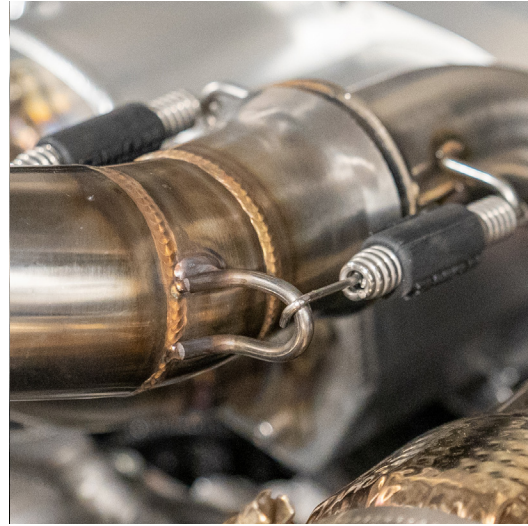
Attach the Black Exhaust Frame Bracket to the Stainless Steel Exhaust Brackets by using four Button Bolts.

If there is paint preventing the Button Bolts from threading in, you can use a small drill to remove the excess paint.



STEP 5.

Thread the Hexagon Bolts through Black Exhaust Frame Bracket and add one Stainless Washer and one Rubber Bushing to each bolt under the brackets, and secure it to the bike frame where the stock was removed.



STEP 6.

Place the Graphite Gasket between the two pipes and then use the two RJWC Springs to connect the Header Pipe to the APX exhaust.



STEP 7.

You have now completed the installation!

Don't forget to retighten all bolts after your first ride!